

Fords.

SALES | LETTINGS | NEW HOMES



Lumo Living, Flat 10 65-69 London Road, High Wycombe, HP11 1BN

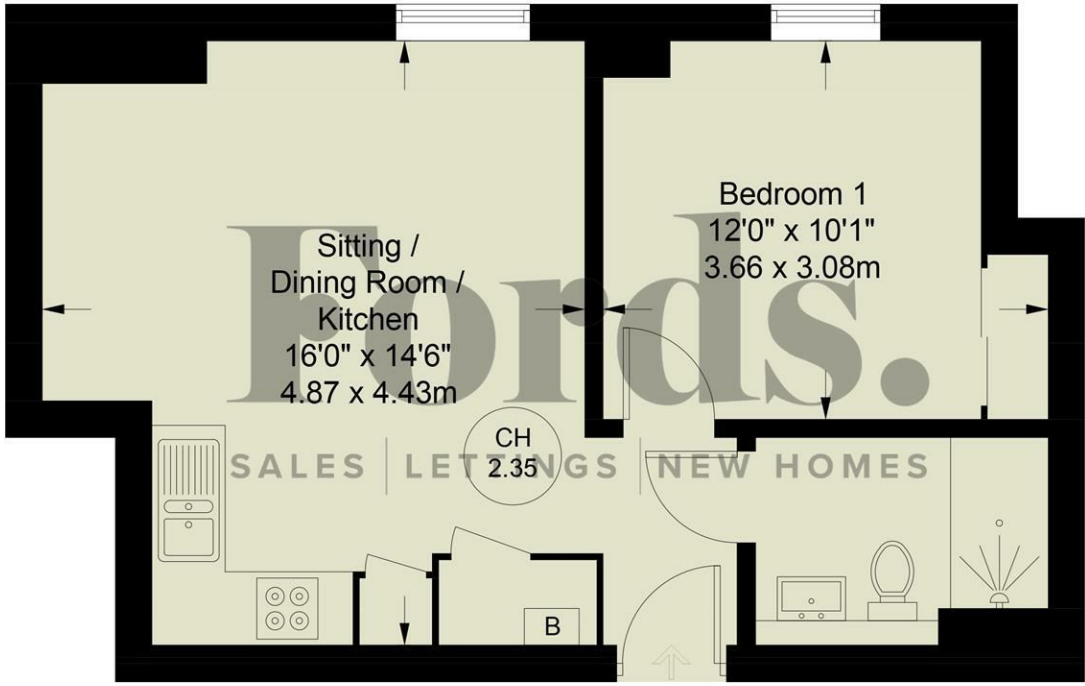
BRAND NEW 1 BED APARTMENTS OPPOSITE RYE PARK & LIDO - FIRST MONTH RENT FREE - EPC B - C.25 MINS TO LONDON MARYLEBONE - PETS CONSIDERED

Be the first to move into this stylish one-bedroom apartment, part of an exclusive collection of just 23 high-spec homes in a sought-after High Wycombe location.

- Brand New Development of 23 Apartments
- One Bedroom Apartment - First Month's Rent Free!
- Ultra Fast Fibre Broadband
- Double Bedroom w/ Fitted Wardrobes
- Individually Designed Fully-Fitted Contemporary Kitchens
- Video Intercom Entry System
- Secure Gated Parking Available
- Nearby to Town Centre & Train Station
- EPC B - Lower Energy Bills
- Available from April 2026

£1,350 Per month

CH 2.35 = Ceiling Height



Second Floor

IN

Floor Plan produced for Ford & Partners by Media Arcade ©. Illustration for identification purposes only. Window and door openings are approximate. Whilst every attempt is made to assure accuracy in the preparation of this plan, please check all dimensions, shapes and compass bearings before making any decisions reliant upon them.

Energy Efficiency Rating		Current	Potential
Very energy efficient - lower running costs			
(92 plus) A			
(81-91) B			
(69-80) C			
(55-68) D			
(39-54) E			
(21-38) F			
(1-20) G			
Not energy efficient - higher running costs			
England & Wales	EU Directive 2002/91/EC		

Environmental Impact (CO ₂) Rating		Current	Potential
Very environmentally friendly - lower CO ₂ emissions			
(92 plus) A			
(81-91) B			
(69-80) C			
(55-68) D			
(39-54) E			
(21-38) F			
(1-20) G			
Not environmentally friendly - higher CO ₂ emissions			
England & Wales	EU Directive 2002/91/EC		

